

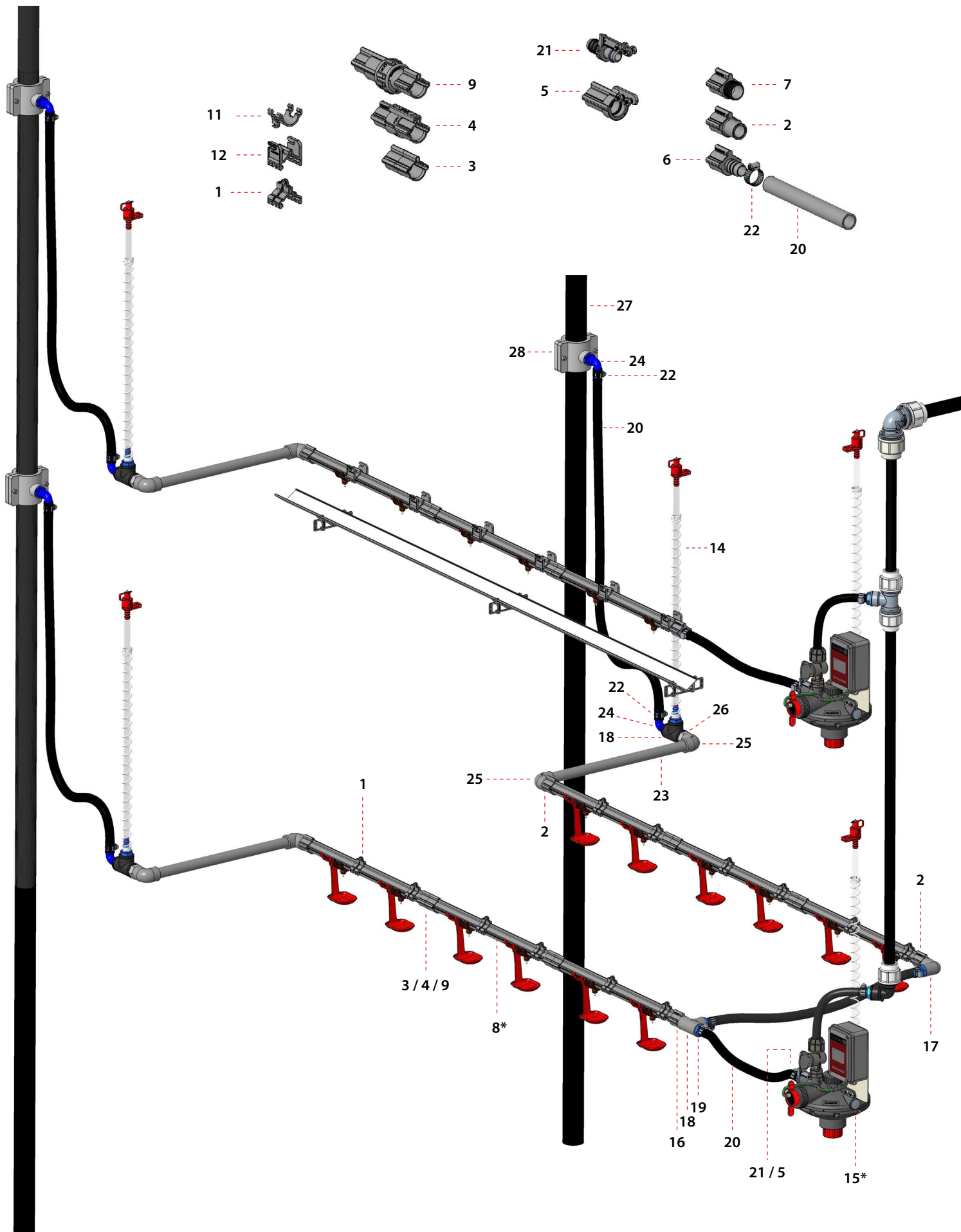


Shaped Drinking Tube For Cages Systems (SDT)



SDT – Shaped Drinking Tube **Plasson unique solution for round pipe drinking system in cages**

- A new pipe design eliminates the need for aluminum support profile.
- A round pipe design improves water flow and allows efficient flushing to maintain clean and Bio-film free system.
- A full set of adaptors and connectors assist in quick assembly and perfect sealing between the system sections.
- Dismantling nipples or entire pipe section for maintenance becomes an easy task thanks to the special bayonet connectors.
- Operates perfectly with Plasson advanced water management tools – WOD Pro and Flush Control.



Items

No.	Cat No.	Description
1	02201032	SDT suspension Clip for Cage
2	02201044	SDT to 25MM Male Fitting
3	02201033	SDT Cemented Fitting
4	02201034	SDT Bayonet Fitting COM.
5	02201045	SDT to MK2 Female Fitting COM.
6	02201053	SDT to 3/4 Barbed Fitting
7	02201043	SDT to 3/4 BSPT Fitting
8*		PVC SHAPED DRINKING TUBE (SDT) (*) Tube lengths and number of nipples per section, will be determined per each project.
9	02201039	SDT Expansion Fitting COM.
10	02201057	SDT Water Trough Cage Support
11	02201058	SDT Clip for Layers
12	02201059	SDT Suspension Double Clip for Layer Cage

Line Head

No.	Cat No.	Description
15**		Line head pressure regulator (**) The type of the pressure regulator will be determined per project
16	052102025007	Socket Nipple THR-CE 32(25)-3/4"
17	050502025007	90° Elbow THR-CEM PVC 25-3/4"
18	050407007	Tee 3/4" PP
19	02209136	Male Adaptor Straight Hose Connector 19MM-3/4"
20	02209077	Flex. Tube 3.4
21	02209985	Pressure REG MK2 Adaptor to Flex Pipe 3/4" W/ Bolts & Nuts COM.
22	02209083	Pipe Clamp (ST.ST.) 14-27
2	02201044	SDT to 25MM Male Fitting

End Line

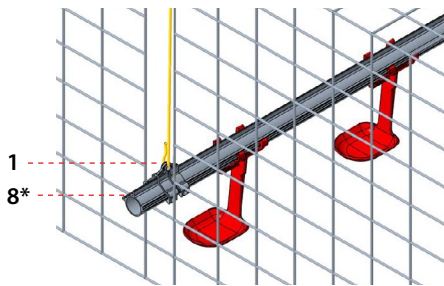
No.	Cat No.	Description
23	02205130	PVC Unperforated Pipe 25 X 2960 MM
14	02204150	Pressure Indicator Double Sealing 60 for Cages W/ 3_4 Threaded Set
22	02209083	Pipe Clamp (ST.ST.) 14-27
18	050407007	Tee 3/4" PP
24	02209143	Male Adaptor Thread Elbow Hose Connector 19MM-3/4"
25	050500025	90° Elbow-Cement PVC 25
26	050602025007	Nipple THR-CEM PVC 25(20)3/4"
20	02209077	Flex. Tube 3/4 (PER 1M.)

Drain

No.	Cat No.	Description
2	02201044	SDT to 25MM Male Fitting
27	32141050IS	PIPE SDR17 SIZE 50
13	160860050007	Saddle 50-3/4"
24	02209143	Male Adaptor Thread Elbow Hose Connector 19MM-3/4"
22	02209083	Pipe Clamp (ST.ST.) 14-27

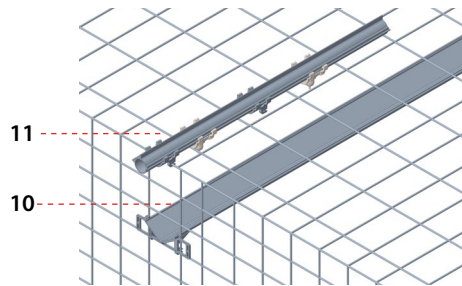
Lines installation options:

Suspended



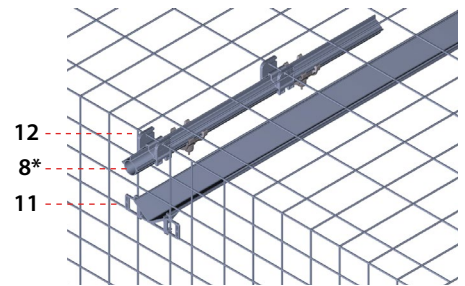
A designated suspension clip, allows raising and lowering the drinking lines. Used for Pullets and for Broilers houses.

Fixed above the cage ceiling



A designated clip to fix the drinking line above the cage ceiling. Used for Layers houses.

Fixed under the cage ceiling



A designated clip to fix the drinking lines under the cage ceiling. Used for Layers houses.

Sections connectors:

SDT Cemented fitting

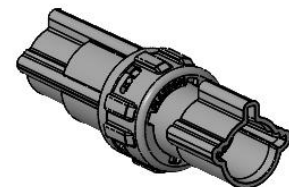
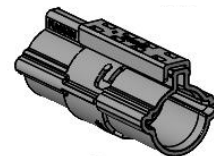
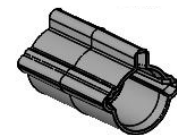
The simplest option to glue two pipe sections together.

SDT Bayonet fitting

Quick and multiple mechanical connection / disconnection of sections (no glue required).

SDT Expansion fitting

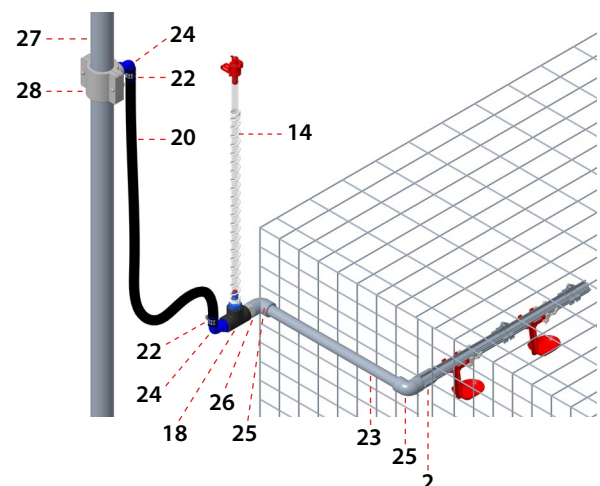
Used in fixed connection systems to allow pipes contraction / expansion movement due to temp. changes.



Line End Drainage system:

Special drainage system was designed to collect flushed water from all the lines in the house.

The system allows efficient automatic water flushing regime, without any manual work.

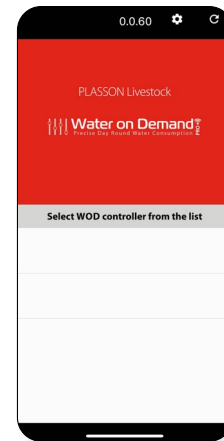


Add-Ons

WOD-Pro system

A Revolutionary Solution for optimal Precise Water Management & Control of water pressure in all drinking lines according to birds' changing demands, during a daily 24-hour cycle and through the grow-out, from one central point.

- Increase Drinking (water intake).
- Less effort to drink (less bruises from peak crowding).
- Better balance of water pressure along the lines.
- Reduced pressure when demand is low.
- Drier litter (without reducing water supply).
- Immediate response in stress events.



Flush Control system

An Automatic flushing system operated by a mobile App.

- Elegant & Functional design – Solenoid is integrated to the Regulator body. Components are safely protected.
- Flushing plan is pre-programmed for the entire cycle.
- Aligns with increasing legislation of animal welfare institutions & ABF requirements.
- Smart Phone Application (Blue Tooth operated).
- Eliminate cables and Electrician costs.
- Simplicity and Flexibility – manage the system with your smart phone.
- Probably the most practical solution for flushing nipple lines in cages systems.



"If it's not Automatic – It's not done."



Feeding



Drinking



Climate



Housing

Maagan Michael, D.N. Menashe, 3780500, Israel • Tel: +972-73-241300 • Fax: +972-73-2333711 • info@plassonlivestock.com

WWW.PLASSONLIVESTOCK.COM