



# CPS

## Condensation Prevention System







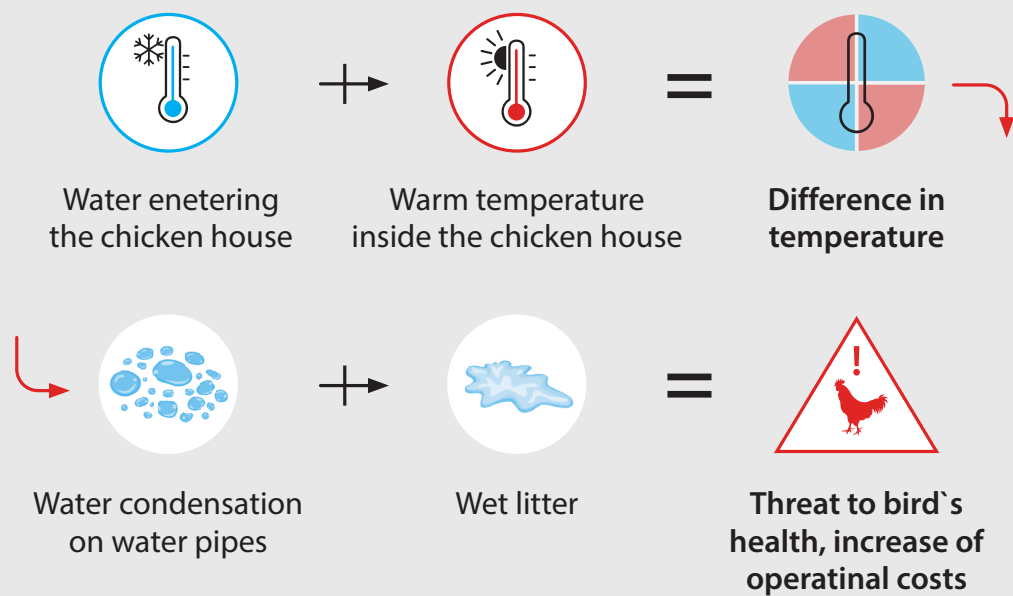
Sweating pipes **without CPS**



Dry pipes **with CPS**

PLASSON CPS prevents condensation on the incoming water pipes by proportionally adding warm water from a heater in the service room, to adjust incoming water temperature to the poultry house temperature.

- Avoid litter wetness
- Keep best litter conditions for birds welfare
- Reduce health hazards
- Reduce operational costs:
  - Minimize the need for adding fresh litter
  - Minimize ventilation levels, thus energy costs, required to dry and refresh the litter
  - Minimize labor costs involved in maintenance of good litter condition

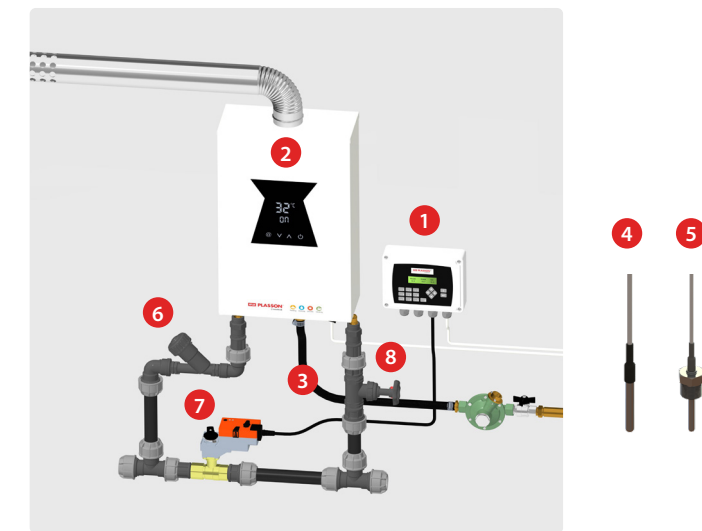


## When is the system required?

- The system is useful where the difference in temperature between the incoming water temperature and the house temperature, is over 10°C (50°F), or in places with over 80% Relative Humidity.
- The system is activated when a preset difference between the incoming water temperature and the house temperature occurs.

## CPS system components

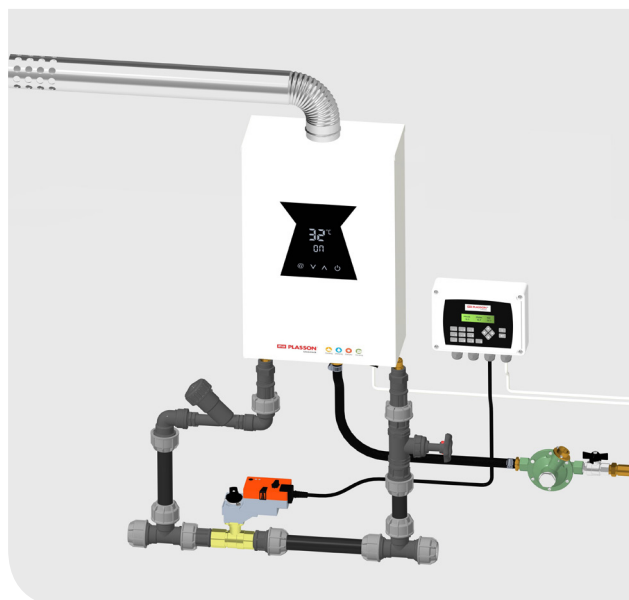
1. CPS control unit
2. Water heater based on LPG Gas
3. Gas pipe LPG
4. Inside house temperature sensor
5. Water temperature sensor (inlet)
6. Non return valve
7. Water mixer tap (analog)
8. Water mechanical tap



02207068	CPS Control Set
02207069	CPS Water Plumbing Set
02387139	CPS Gas Water Heater 16L/MIN. 110-220V 50/60 HZ (JSQ16ST-S23W14) LPG

For further information see installation and operation instructions.

## CPS Condensation Prevention System



**PLASSON®**  
Livestock



Feeding



Drinking



Climate



Housing

Maagan Michael, D.N. Menashe, 3780500, Israel • Tel: +972-73-2413001 • Fax: +972-73-2333711 • [info@plassonlivestock.com](mailto:info@plassonlivestock.com)

[www.plassonlivestock.com](http://www.plassonlivestock.com)